



RELIABILITY IN  
OBSTRUCTION  
LIGHTING

A photograph of a white wind turbine against a dark blue background. The turbine's nacelle is illuminated with bright, starburst-like lights, representing obstruction lighting. Other turbines are visible in the background, also with lights. The overall scene is set against a dark blue sky with some circular patterns.

## OBSTRUCTION LIGHTING FOR WIND TURBINE

[www.obsta.com](http://www.obsta.com)

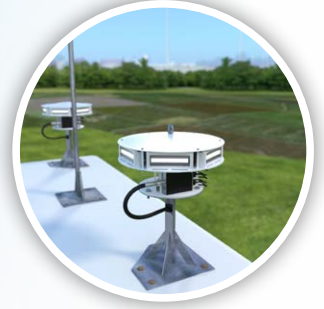
## Obstruction lighting for wind turbines

### AT THE TOP LEVEL

**OFC**  
Compact Medium  
Intensity Red

Or

**OFI**  
Medium Intensity  
Dual color



### AT MID LEVEL

**NAVILITE** Low Intensity type E





**OPTION WITH DAY AND NIGHT OPERATION**

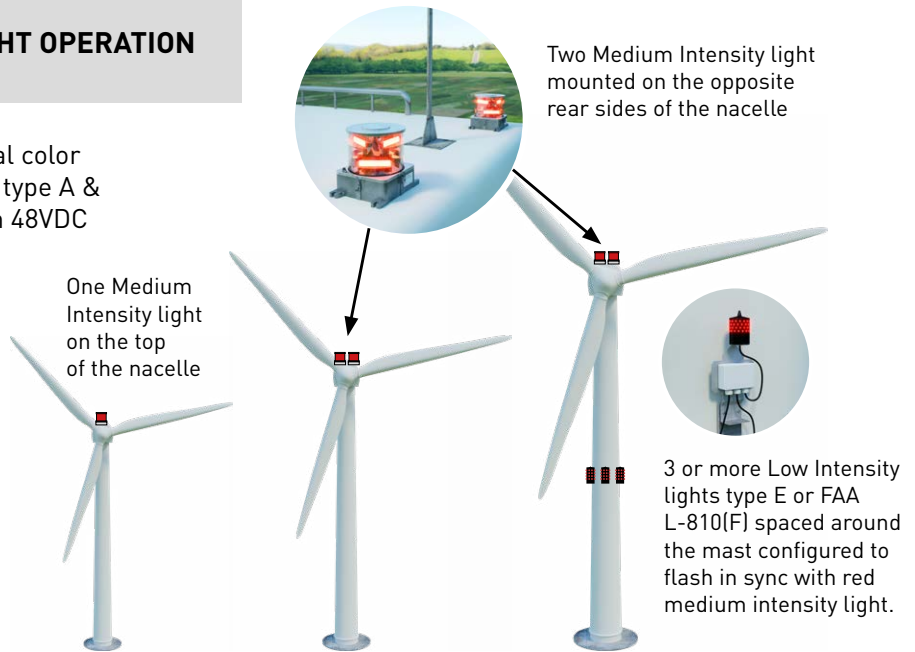
At the top of the wind turbine, one or two dual color Medium Intensity type A & B or type A & C or type A & Feuer\_W\_rot or FAA L-865/L-864 powered in 48VDC depending on the country registrations

For FAA, 1 or 2 L-864 flashing red light at the top of the nacelle depending on the height of the wind turbine :

- 1 single FAA type L-864 if **wind turbine ≤ 499ft (152m)**

- 2 FAA type L-864 if **499ft (152m) ≤ wind turbine ≤ 699ft (213m)**

- 3 or more FAA type L-810(F) spaced around mast at mid level for **turbine > 699ft (213m)** need to be added.



**OFI360-RW dual color Medium Intensity**  
*First fully modular beacon*

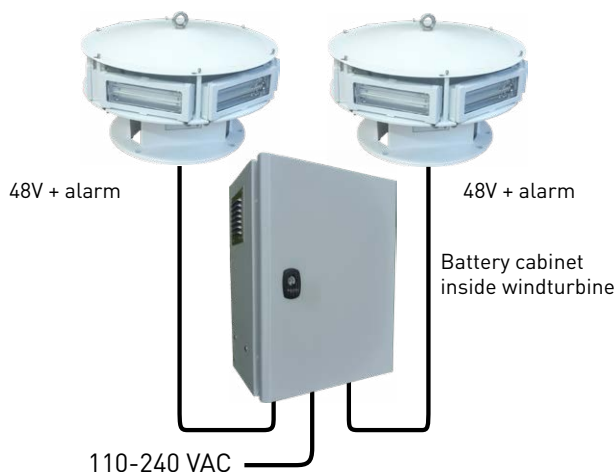


**Dual color Obstaflash with DC integrated power unit**



- ICAO medium intensity type A & B/C compliant
- FAA L-865/L-864 certified
- 6 independent and fully replaceable LED projectors in aluminum and military graded glass
- Dc power unit inside the flashhead in a stainless enclosure
- 2 white led circuits in redundancy per projector
- Dual level Surge Protective Device (AC and DC) for longer life expectancy and improved reliability
- Made up with captive parts

**Inside the wind turbine, one 48 VDC battery cabinet (240 VAC input power) with battery back-up**



**Set chargers / batteries**

- Metal enclosure
- 110 VAC to 240 VAC input, 48 VDC output
- 12 hours back up
- Protection against transient overvoltages on AC and DC side
- Protection against deep discharge batteries
- Operating temperature : -30/+55°C



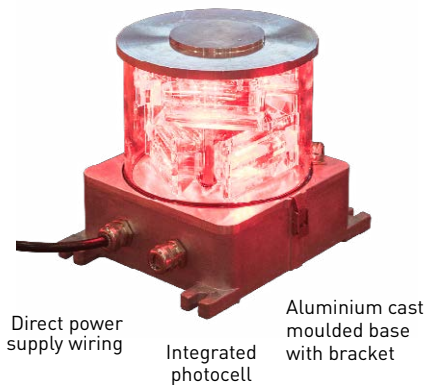
### OPTION WITH NIGHT ONLY OPERATION

*(in the option the wind turbine may be painted with red stripes for the day marking)*

At the top of the nacelle, one or two red Medium intensity type B or type C or FAA L-864 or Feuer\_W\_rot powered in 48 VDC

## OFC Red Medium Intensity

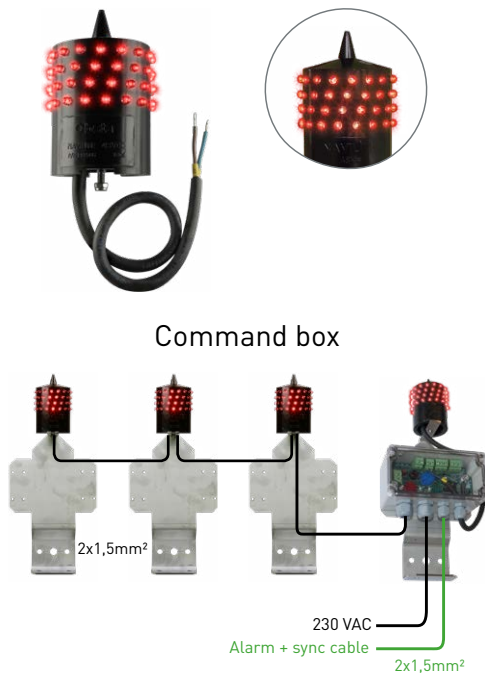
STAC



- ICAO verified Type B & C, FAA pending
- Self-contained, 360° plug and fix
- Projectors made of hard glass (no plastic) 2 LED circuits
- Configurable flash rate (ICAO MI type B) or steady burning (OACI MI type C)
- Alarm in case of light or power failure
- Very low power consumption
- Surge protection included
- Optional GPS interface for synchronisation
- NVG compliant under FAA and Suisse OFAC directive in option
- Dimensions: 20cmx20cmx20cm, weight : 5kg

## NAVILITE Mid Level

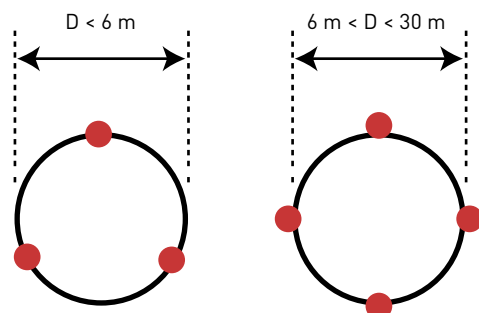
### NAVILITE 48 VDC body with a luminous part



- ICAO verified Type B
- Bird spike
- Very compact
- Resin molded for IP67
- Full waterproof
- No corrosion
- 64 LED in redundancy
- No grounding issue (Class II) Photocell Alarm in case of light or power failure Surge protection 1 to 4 lampes possible to be connected
- Control up to 4 NAVILITE 48 VDC in fixed or flashing mode (low intensity type E)
- Surge protection
- Alarm in case of light or power failure
- On/off and top synchronized with red medium intensity light at night only
- powered in 48 VDC through same battery cabinet than medium intensity or directly in AC.
- Top sync from medium intensity

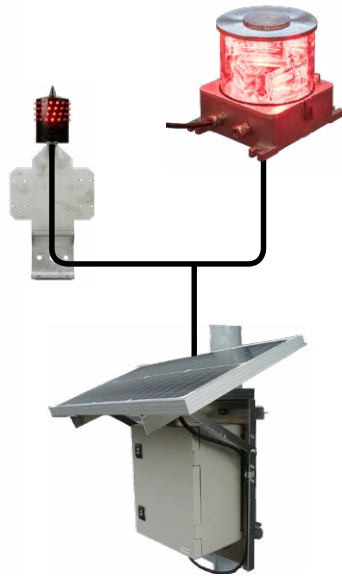
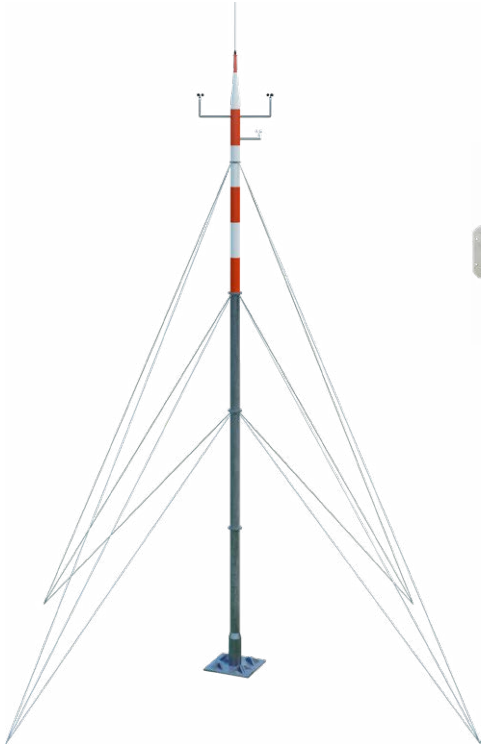
### OPTION WITH ADDITIONAL LIGHTS AT MID LEVEL

For wind turbines above 150 meters high, additional 3 or 4 low intensity lights type B or E or FAA L-810(F) may be added around the mast at mid level of the mast



# OBSTRUCTION LIGHTS FOR WIND-MAST

*painted with red and white stripes for the day*



1 red medium intensity at the top

1 or 2 low intensity at mid level

1 solar kit





RELIABILITY IN  
OBSTRUCTION  
LIGHTING

### Head Office

#### OBSTA

2 rue Troyon  
92316 Sèvres CEDEX  
France  
Tél. : +33 1 41 23 50 10  
Fax : +33 1 41 23 50 11  
e-mail : [info@obsta.com](mailto:info@obsta.com)  
Web : [www.obsta.com](http://www.obsta.com)

### Factory

#### OBSTA

3 impasse de la Blanchisserie  
BP 56  
51052 Reims CEDEX  
France  
Tél. : +33 3 26 85 74 00

### Germany

#### CITEL Electronics GmbH

Alleestrasse 144, Tor 5  
D-44793 Bochum  
Germany  
Tél. : +49 234 54 72 10  
Fax : +49 234 54 72 199  
e-mail : [info@citel.de](mailto:info@citel.de)  
Web : [www.citel.de](http://www.citel.de)

### USA

#### CITEL Inc.

10108 USA Today Way  
Miramar FL33025  
USA  
Tél. : +1 954 430 6310  
Fax : +1 954 430 7785  
e-mail : [info@citel.us](mailto:info@citel.us)  
Web : [www.citel.us](http://www.citel.us)

A CITEL company



**CITEL**

[www.citel.fr](http://www.citel.fr)