

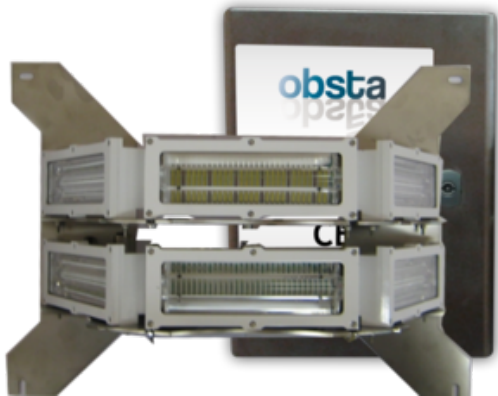
OFH-180-WW-048

Led high intensity type B 48VDC

- Compliant with high intensity type B according to ICAO annex 14 chapter 6 edition 2013
- To be used on the support of the transmission line in case it is not possible to install day warning spheres on the cables (3 levels of 2 lights on opposite side of the tower supporting power cables)

P/N : **113780B**

The led OBSTAFLASH180 high intensity type B is a day & night white color flashing obstruction light dedicated to transmission lines when it is not possible to install markers on the high voltage cables.



Key Points

Flashhead

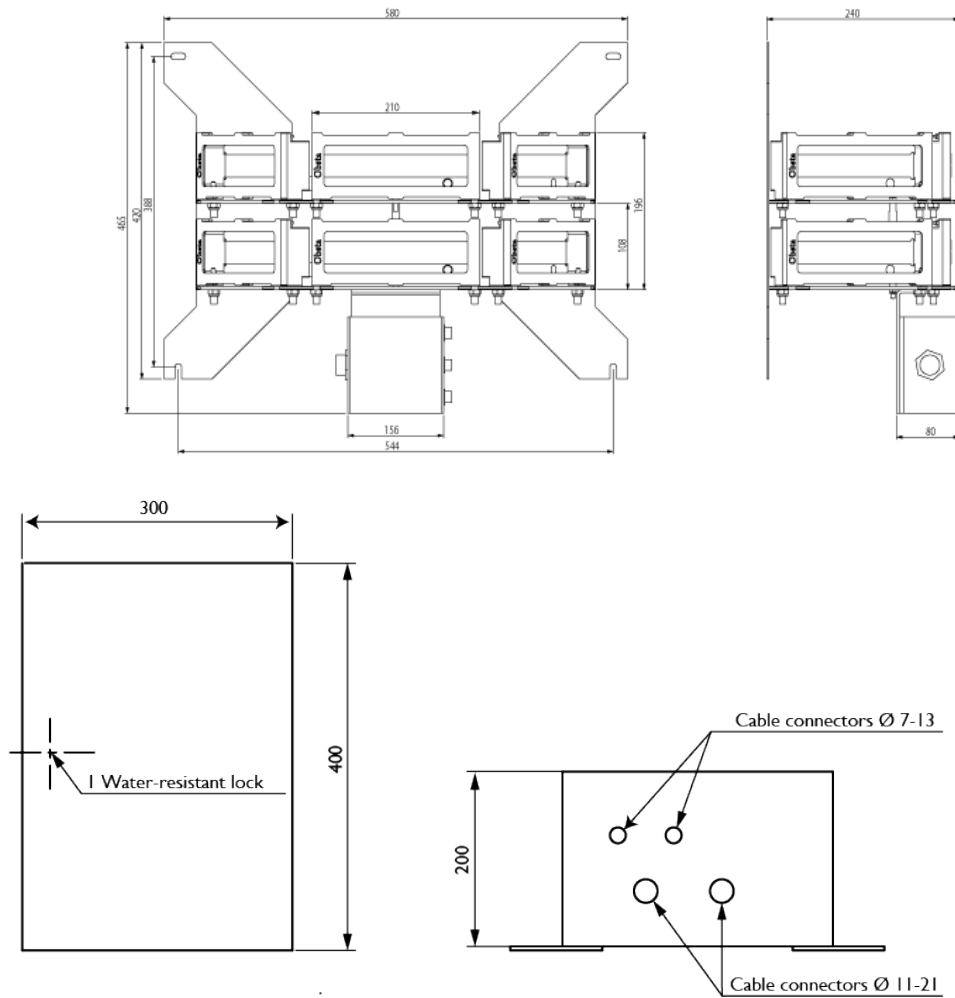
- 6 led projectors coming with connectors
- Aluminium and glass enveloppe
- No losing parts and no special tools required to remove projectors
- Molded junction box with connectors

Power supply

- 'Weather tight' stainless steel 316L power cabinet enclosure
- 6 independant power supplies providing a high redundancy level
- Test button
- synchronisation of the flashes sequentially; first the middle lights, second the top lights and last, the bottom lights
- Surge protection included

Electrical Characteristics		
Power supply		48VDC -10%/+15% (max current 14A)
Average power consumption		120W (day time)
Mechanical Characteristics		
Operating temperature		-40/+55°C
Size of the light		420mm (height) x 580mm (width)
Size of the power supply		400mm (height) x 300mm (width) x 200mm (dept)
IP degree		IP66 per projector
Wiring		Entry of cable by glands nickel plated brass and connection by terminals
Wire cross section		from 1 to 4 mm ²

Mechanical Characteristics



Photometric Characteristics		
Effective light output day time at 0° on site		100 000cd (white)
Effective light output twilight mode at 0° on site		20 000cd (white)
Effective light output night mode at 0° on site		2000cd (white or red)
Color day/twilight time		white
Color night time		white (or red in option)
Vertical beam spread		>3°
Horizontal beam spread		360° with minimum 2 flashheads on opposite side
Flash per minute		40
Standards		
Standards compliance		ICAO annexe 14 chapter 6 (7th edition 2016), EASA (4th edition 2017)